

EN

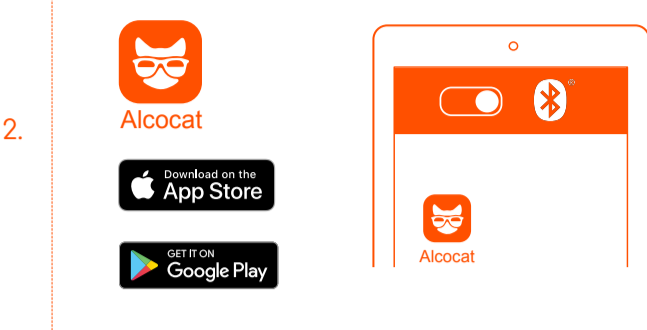
In this box you will find



Alcometer

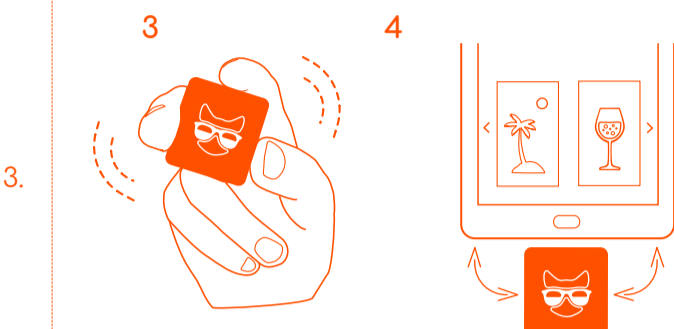
Bottle opener with magnet

Wireless charger



1

2



3.

4

Pair Alcometer with your smartphone

1. Download the Alcometer APP on the App Store or Google Play
2. Turn on smartphone's Bluetooth and open the app
3. Shake the alcometer 3 times to switch on its white LED lights
4. Pair the alcometer with your smartphone and start using it

Alcometer LED light signals

Fading white light - ready to pair with smartphone

Short red light - battery is empty

Stable white light - devices are paired

4.

How to use

1. Press the button on app or shake the device again after white LED lights has switched on
2. As soon as blue LED lights start to blink, alcometer has started to warm up
3. While holding the alcometer, be sure that tiny holes for airflow on the sides of the device are not covered
4. When blue LED lights are blinking rapidly, blow 5 seconds deeply from the lungs towards to alcometer's hole
5. Stable blue LED light indicates that

5.

5.

alcometer is measuring BAC

6. Blinking blue LED light after measuring process means that result of the BAC has been calculated
7. Blinking red light means error. Try again
8. Measured BAC results are also indicated on the device:
green light - sober
yellow light - under 0.2‰
red light - over 0.2‰

Incase smartphone's battery is empty, you are able to use alcometer separately. LED light colors will indicate approximate measured results. Shake the device and follow LED light instructions as described above

6.

Accurate result

To get accurate result, wait 20 minutes after drinking or smoking.

If the product has not been used for 24 hours, the device may show a lower result due to dust particles.

If necessary, please repeat the test.

Wireless charging

Red LED lights on the device indicate that the battery is empty. Charging the battery with Alcometer wireless charger takes up to 3 hours

7.

8. Alcometer

1. Connect powered micro-USB cable to the charger
2. Place the alcometer exactly on the center of the charger
3. Follow the blinking light:
red light - under 20% charged
yellow light - 20%-70% charged
green light - 70%-99% charged
4. Stable green light - alcometer is fully charged

8.

Warranty: Without limiting foregoing, this warranty does not apply to, the following:

- Use with non-Alcometer accessories such as wireless charger;
- Normal wear and tear or aging of the product, such as scratches, dents, scuffs, or loosening of parts over time;
- Defects or damage caused by misuse, accident, alteration, unusual stress, modification, improper or unauthorized repair, improper storage or third-party applications downloaded to the product;
- Damage caused by using the products outside the permitted or intended uses described in instructions provided by Alcometer;

9.

- Modifications of the product's firmware or software by anyone other than Alcometer;
- Use with improper voltage, power supply or batteries; or
- Damage due to excessive moisture.

- Alcometer alcometer has been used before 20 minutes after drinking an alcoholic drink.

- Silicone compounds/gases will damage the product. The product is intended for use in rooms filled with fresh air.

To save a tree please read and watch videos about all important information according to Privacy Policy, Terms of use, Usage of the device, FAQ from alcometer.com

10.